

© 2024 RPS Group  
 Notes  
 1. This drawing has been prepared in accordance with the scope of RPS's appointment with its client and is subject to the terms and conditions of that appointment. RPS accepts no liability for any use of this document other than by its client and only for the purposes for which it was prepared and provided.  
 2. If received electronically it is the recipient's responsibility to print to correct scale. Only written dimensions should be used.

- Legend**
- Order Limits
  - Representative Viewpoints
  - ▲ Representative Viewpoints - For Photomontage
  - Zone of Theoretical Visibility - Built Elements
  - Zone of Theoretical Visibility - Panels
  - Zone of Theoretical Visibility - Panels and Built Elements

Data source	OS Terrain 5
Date sourced	2021
Coverage	Within 5km of the site.
Original cell size	5m
Ground cover is modelled using indicative heights of 9m for buildings, and 12m for woodland blocks. Ground cover is located using OS Open Maps.	ZTV calculated using panel heights of 2.3m, PCS heights of 3.5m, NG substation heights of 12.5m, main substation heights of 11m, and secondary substation heights of 6m
ZTV is not calculated beyond 5km from the site areas	Viewer height is 2m
ZTV calculation does not use mathematically approximate methods	The effects of earth curvature and light refraction are considered

Rev	Description	By	CB	Date

PHOTOVOLT  
DEVELOPMENT PARTNERS

**RPS**  
A TETRA TECH COMPANY

Client **PVDP**

Project **Botley West Solar Farm**

Title **Representative Viewpoints**

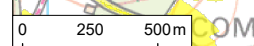
Status **FINAL**      Drawn By **JM**      PM/Checked By **CL**

Drawing Number **EN010147/APP/6.4**      Scale @ A3 **1:28,000**      Date Created **NOV 2024**

Figure Number **8.9**      Rev **-**

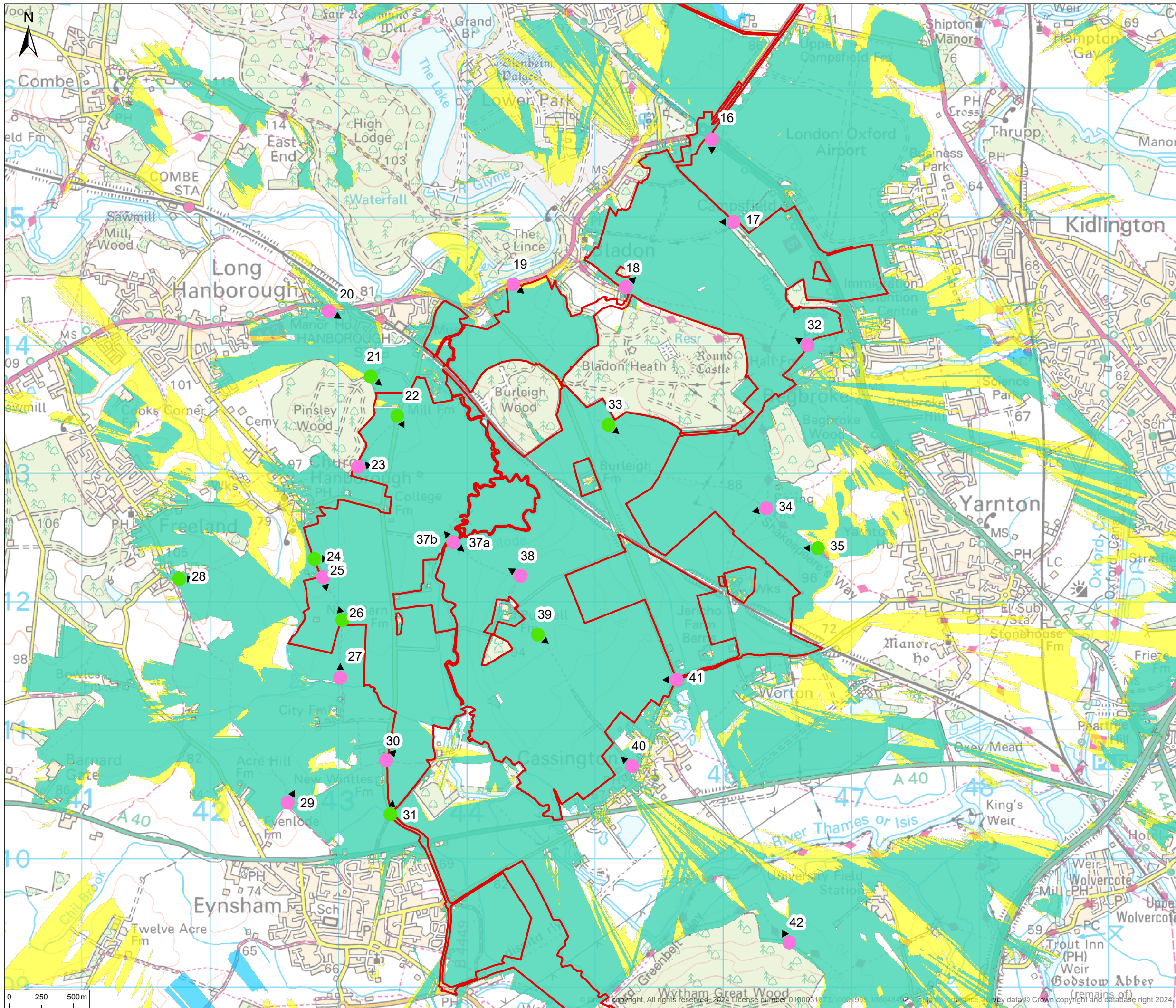
**rpsgroup.com**  
 20 Western Avenue, Milton Park, Abingdon, Oxfordshire, OX14 4SH  
 T: +44(0)1235 821 888 E: rps@rpsgroup.com

P:\eur-mpfs-02.eur.rpsgroup.com\Projects\LANDSCAPE\USL\4317 Land West of Botley Solar Farm\Tech\Drawings\4317-0027-11.aprx



© Crown copyright and database right 2024. License number 0100031672. Contains Ordnance Survey data © Crown copyright and database right 2024.





© 2024 RPS Group  
 Notes  
 1. This drawing has been prepared in accordance with the scope of RPS's appointment with its client and is subject to the terms and conditions of that appointment. RPS accepts no liability for any use of this document other than by its client and only for the purposes for which it was prepared and provided.  
 2. If received electronically it is the recipients responsibility to print to correct scale. Only written dimensions should be used.

**Legend**

- Order Limits
- ▲ Representative Viewpoints
- ▲ Representative Viewpoints - For Photomontage
- Zone of Theoretical Visibility - Built Elements
- Zone of Theoretical Visibility - Panels
- Zone of Theoretical Visibility - Panels and Built Elements

Data source	OS Terrain 5
Date sourced	2021
Coverage	Within 5km of the site.
Original cell size	5m
Ground cover is modelled using indicative heights of 9m for buildings, and 12m for woodland blocks. Ground cover is located using OS Open Maps.	ZTV calculated using panel heights of 2.3m, PCS heights of 3.5m, NG substation heights of 12.5m, main substation heights of 11m, and secondary substation heights of 6m
ZTV is not calculated beyond 5km from the site areas	Viewer height is 2m
ZTV calculation does not use mathematically approximate methods	The effects of earth curvature and light refraction are considered

Rev	Description	By	CB	Date



PHOTOVOLT  
DEVELOPMENT PARTNERS



**RPS**  
A TETRA TECH COMPANY

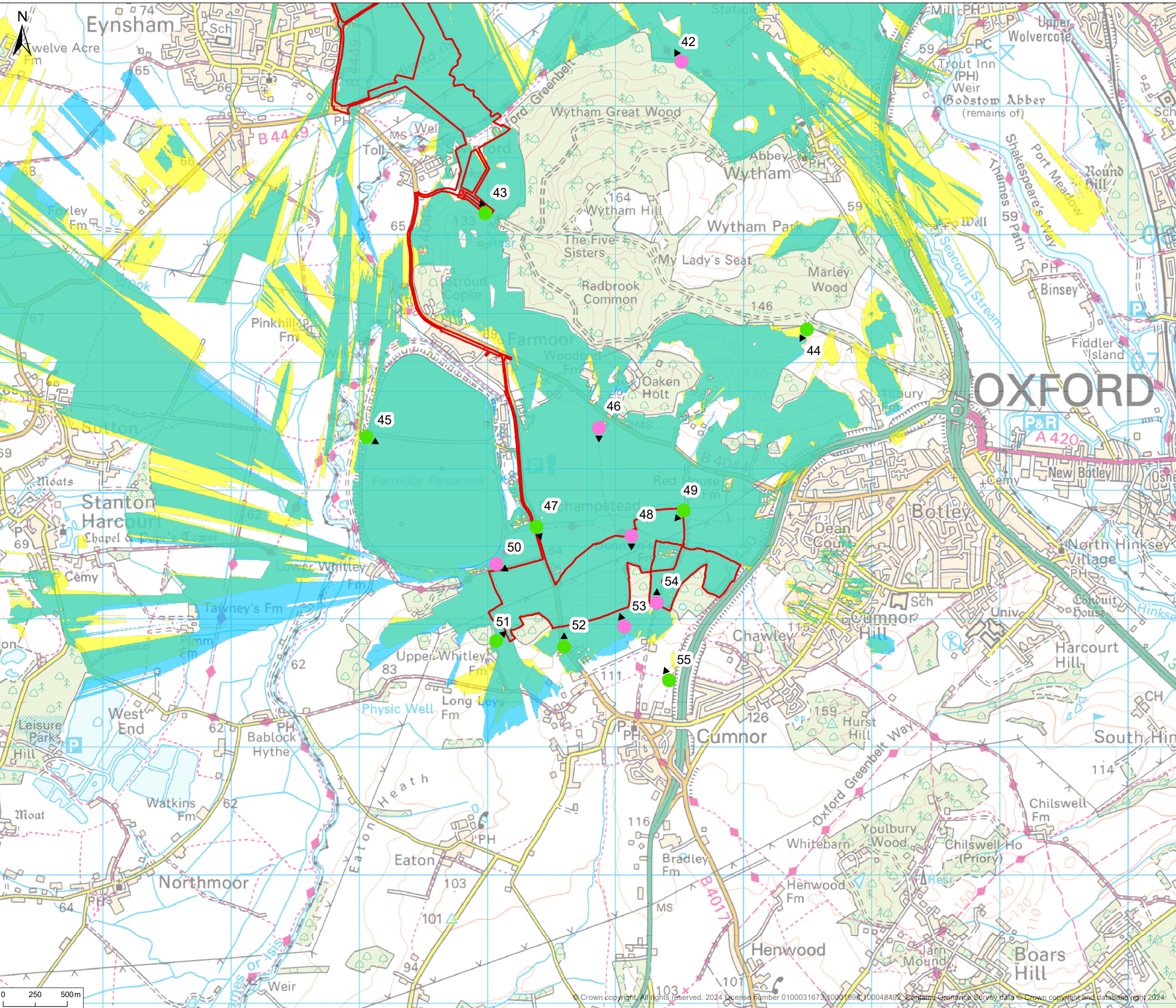
Client	PVDP	
Project	Botley West Solar Farm	
Title	Representative Viewpoints	
Status	Drawn By	PM/Checked By
<b>FINAL</b>	<b>JM</b>	<b>CL</b>
Drawing Number	Scale @ A3	Date Created
EN010147/APP/6.4	1:28,000	NOV 2024
Figure Number		Rev
<b>8.10</b>		-

**rpsgroup.com**  
 20 Western Avenue, Milton Park, Abingdon, Oxfordshire, OX14 4SH  
 T: +44(0)1235 821 888 E: rps@rpsgroup.com

P:\eur-mpfs-02.eur.rpsgroup.com\Projects\LANDSCAPE\USL\4317 Land West of Botley Solar Farm\TechDrawings\4317-0027-11.aprx



P:\eur-mpfs-02.eur.rpsgroup.com\Projects\_LANDSCAPE\USL4317 Land West of Botley Solar Farm\TechDrawings\4317-0027-11.aprx



© 2024 RPS Group  
 Notes  
 1. This drawing has been prepared in accordance with the scope of RPS's appointment with its client and is subject to the terms and conditions of that appointment. RPS accepts no liability for any use of this document other than by its client and only for the purposes for which it was prepared and provided.  
 2. If received electronically it is the recipient's responsibility to print to correct scale. Only written dimensions should be used.

**Legend**

- ▭ Order Limits
- ▲ Representative Viewpoints
- ▲ Representative Viewpoints - For Photomontage
- ▭ Zone of Theoretical Visibility - Built Elements
- ▭ Zone of Theoretical Visibility - Panels
- ▭ Zone of Theoretical Visibility - Panels and Built Elements

Data source	OS Terrain 5
Date sourced	2021
Coverage	Within 5km of the site.
Original cell size	5m
Ground cover is modelled using indicative heights of 9m for buildings, and 12m for woodland blocks. Ground cover is located using OS Open Maps.	ZTV calculated using panel heights of 2.3m, PCS heights of 3.5m, NG substation heights of 12.5m, main substation heights of 11m, and secondary substation heights of 6m
ZTV is not calculated beyond 5km from the site areas	Viewer height is 2m
ZTV calculation does not use mathematically approximate methods	The effects of earth curvature and light refraction are considered

Rev	Description	By	CB	Date



PHOTOVOLT  
DEVELOPMENT PARTNERS



RPS  
A TETRA TECH COMPANY

Client	PVDP	
Project	Botley West Solar Farm	
Title	Representative Viewpoints	
Status	Drawn By	PM/Checked By
FINAL	JM	CL
Drawing Number	Scale @ A3	Date Created
EN010147/APP/6.4	1:28,000	NOV 2024
Figure Number	Rev	
8.11	-	

rpsgroup.com  
 20 Western Avenue, Milton Park, Abingdon, Oxfordshire, OX14 4SH  
 T: +44(0)1235 821 888 E: rps@rpsgroup.com